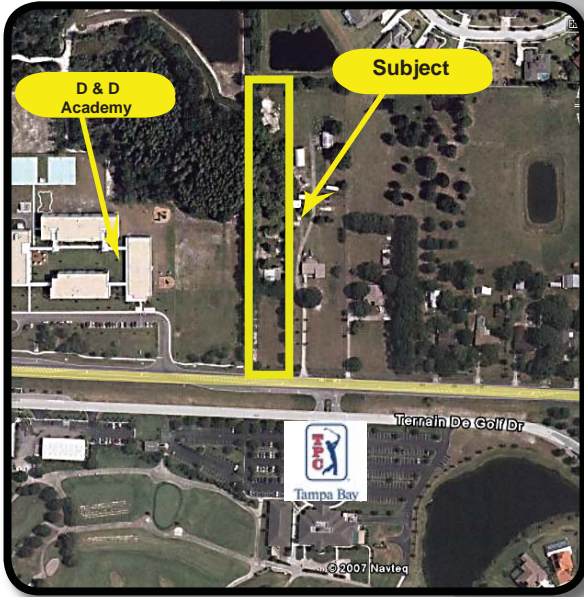


LAND FOR SALE

5307 Lutz Lake Fern Road • Lutz, FL 33558



FEATURES

- 2 Acres MOL
- Prime Land Fronting Lutz Lake Fern Rd.
- Directly Across the Street from the TPC Tampa Bay Golf Course
- 1/2 Mile from the Future Lutz Lake Fern Exit off the Veteran's Expressway
- Price: \$600,000

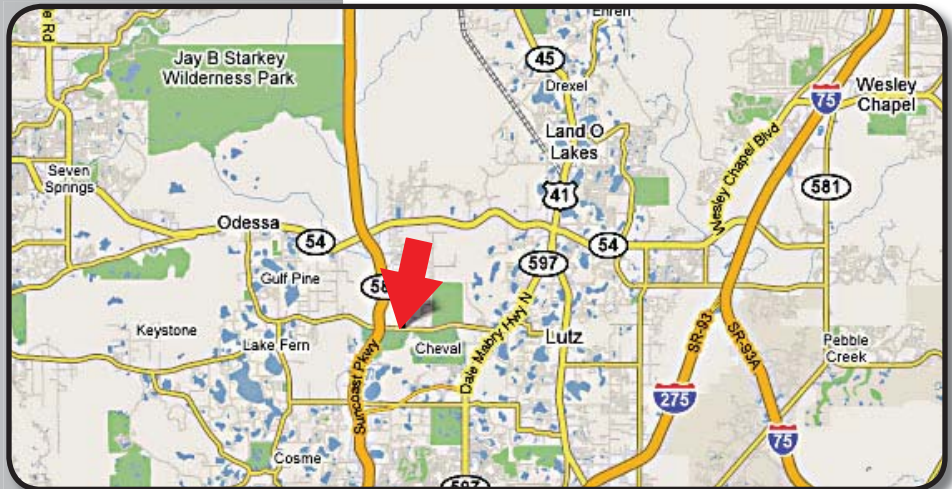
CONTACT:

RYAN LOKKUS

(813) 885-5656 office

(727) 631-4697 mobile

rlolkus@thekraussorg.com



NOTICE TO BROKERS AND PROSPECTIVE PURCHASERS/TENANTS:

THE MATERIAL CONTAINED IN THIS OFFERING IS FURNISHED SOLELY FOR THE PURPOSE OF YOUR CONSIDERATION TO PURCHASE/LEASE THE PROPERTY CONTAINED HEREIN, AND IS NOT TO BE USED FOR ANY OTHER PURPOSE WITHOUT THE EXPRESS WRITTEN CONSENT OF THE KRAUSS ORGANIZATION OR THE OWNER. THE MATERIAL IS BASED ON INFORMATION OBTAINED BY OWNER AND ON INFORMATION OBTAINED BY THE KRAUSS ORGANIZATION FROM SOURCES THEY DEEM RELIABLE. THIS IS A SUMMARY OF PERTINENT FACTS ON THE PROPERTY AND IS NOT INTENDED TO CONTAIN ALL OF THE INFORMATION DESIRED BY A PROSPECTIVE PURCHASER/TENANT. PROSPECTIVE PURCHASERS/TENANTS SHOULD MAKE THEIR OWN INVESTIGATION AND CONCLUSIONS WITHOUT RELIANCE UPON THE MATERIAL CONTAINED HEREIN. NEITHER OWNER NOR THE KRAUSS ORGANIZATION, NOR ANY OF THEIR OFFICERS, EMPLOYEES OR AGENTS MAKE ANY REPRESENTATION OR WARRANTY EXPRESSED OR IMPLIED AS TO THE ACCURACY OR COMPLETENESS OF THIS OFFERING.