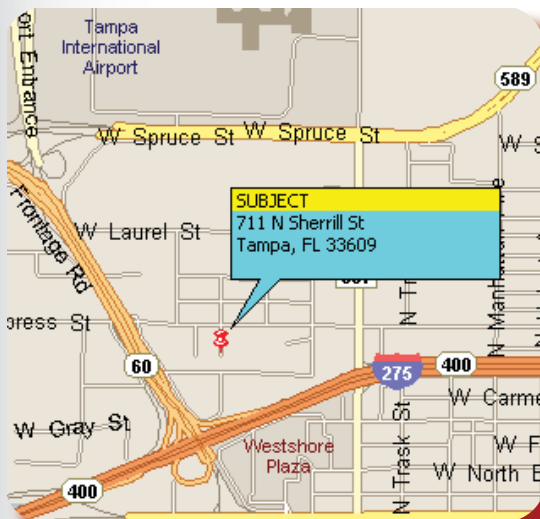


OFFICE SPACE FOR SALE OR LEASE



711 North Sherrill Street
Tampa, FL 33609



FEATURES

- 7,200 SF
- Convenient Westshore Location (Just west of Cypress and Westshore)
- Highly secure
- Lots of parking - 4/1000+
- Blocks from the airport
- Building recently updated
- Custom Built-In Cabinetry
- Sale: \$1,295,000

CONTACT LISTING AGENT:

Ryan Lolkus

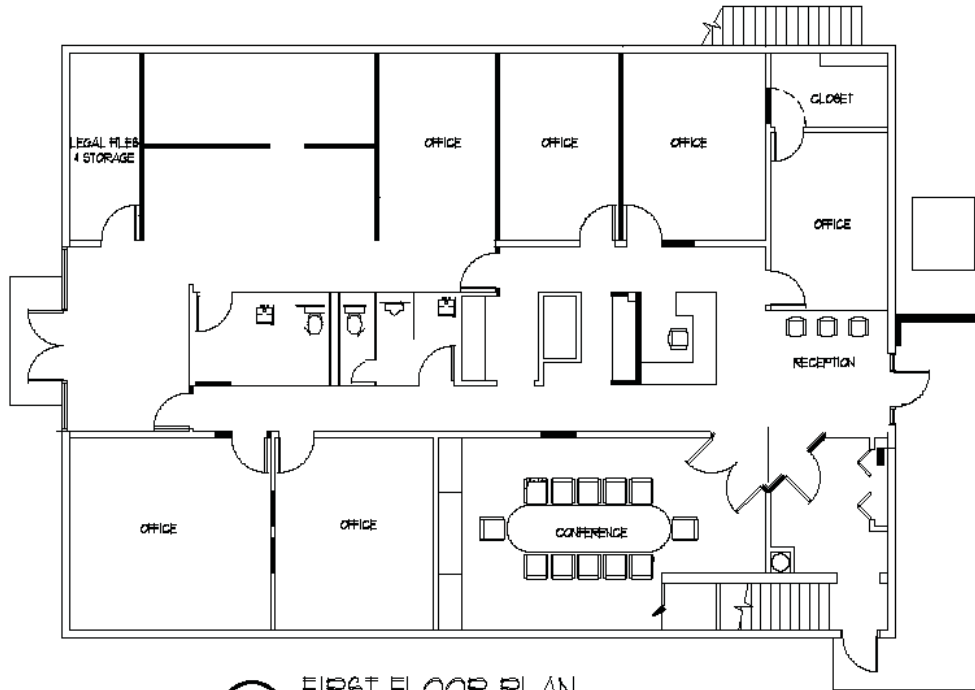
(813) 885-5656 Office

(727)631-4697 Cell

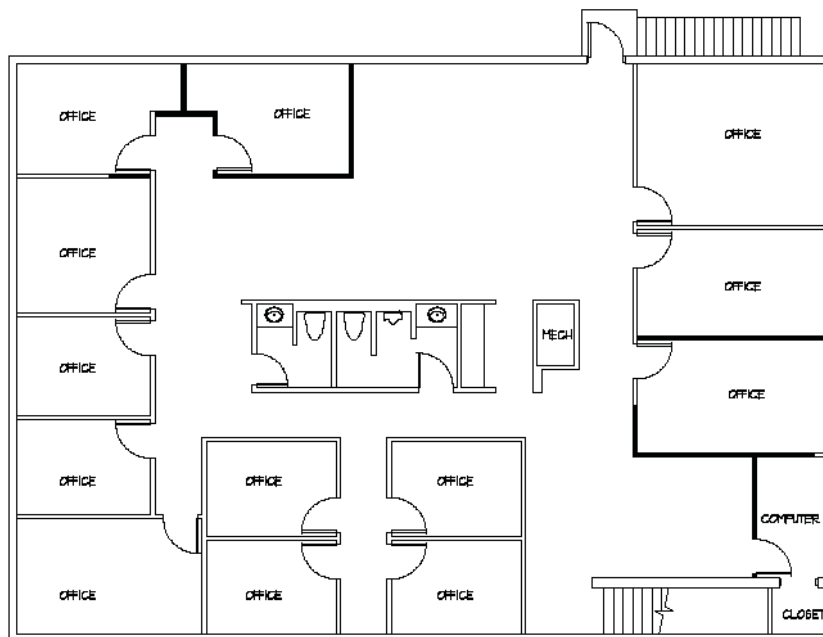
rlolkus@thekraussorg.com

NOTICE TO BROKERS AND PROSPECTIVE PURCHASERS/TENANTS:

THE MATERIAL CONTAINED IN THIS OFFERING IS FURNISHED SOLELY FOR THE PURPOSE OF YOUR CONSIDERATION TO PURCHASE/LEASE THE PROPERTY CONTAINED HEREIN, AND IS NOT TO BE USED FOR ANY OTHER PURPOSE WITHOUT THE EXPRESS WRITTEN CONSENT OF THE KRAUSS ORGANIZATION OR THE OWNER. THE MATERIAL IS BASED ON INFORMATION OBTAINED BY OWNER AND ON INFORMATION OBTAINED BY THE KRAUSS ORGANIZATION FROM SOURCES THEY DEEM RELIABLE. THIS IS A SUMMARY OF PERTINENT FACTS ON THE PROPERTY AND IS NOT INTENDED TO CONTAIN ALL OF THE INFORMATION DESIRED BY A PROSPECTIVE PURCHASER/TENANT. PROSPECTIVE PURCHASERS/TENANTS SHOULD MAKE THEIR OWN INVESTIGATION AND CONCLUSIONS WITHOUT RELIANCE UPON THE MATERIAL CONTAINED HEREIN. NEITHER OWNER NOR THE KRAUSS ORGANIZATION, NOR ANY OF THEIR OFFICERS, EMPLOYEES OR AGENTS MAKE ANY REPRESENTATION OR WARRANTY EXPRESSED OR IMPLIED AS TO THE ACCURACY OR COMPLETENESS OF THIS OFFERING.



1 FIRST FLOOR PLAN



2 SECOND FLOOR PLAN

THE KRAUSS ORGANIZATION
Commercial Real Estate Services • Since 1952



THE KRAUSS ORGANIZATION
Commercial Real Estate Services • Since 1952



